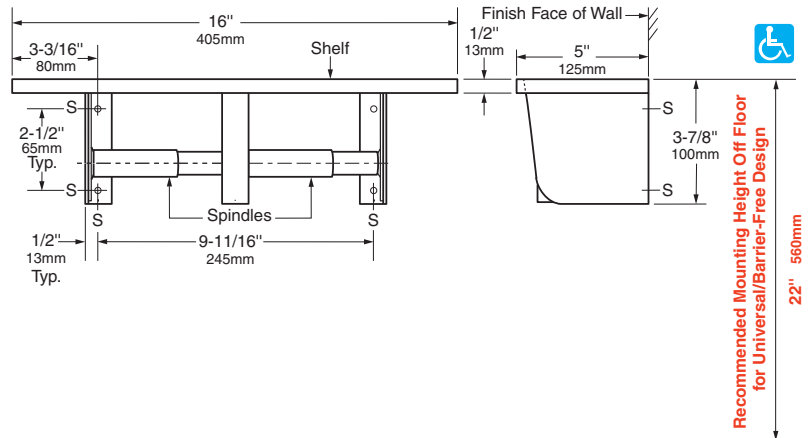
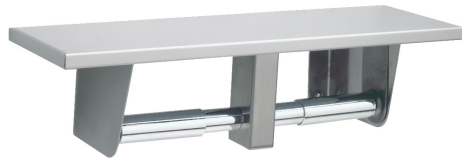




Technical Data

SURFACE-MOUNTED TOILET TISSUE DISPENSER AND UTILITY SHELF

B-2840



MATERIALS:

Shelf — 18-8 S, type-304, 20-gauge (1.0mm) stainless steel with satin finish. 1/2" (13mm) return edges for maximum rigidity. Front edge is hemmed for safety.

Mounting Brackets — 18-8 S, type-304, 18-gauge (1.2mm) stainless steel with satin finish. Welded to shelf.

Toilet Tissue Dispensers (2) — Support brackets are 18-8 S, type-304, 18-gauge (1.2mm) stainless steel with satin finish. Equipped with two chrome-plated plastic spindles, each with a heavy-duty internal spring.

OPERATION:

Close clearance of support brackets deters removal of toilet tissue rolls until they are depleted. Unit holds two standard-core toilet tissue rolls up to 5-1/2" (140mm) diameter (1800 sheets).

Designer's Note: It is recommended that one full toilet tissue roll remain wrapped or taped until the other roll has been depleted to avoid wasting the ends of both rolls.

INSTALLATION:

Mount unit on wall or partition with four #7 x 1-1/2" (3.8 x 38mm) sheet-metal screws (not furnished) at points indicated by an S.

For partitions with particle-board or other solid core, provide sheet-metal screws or through-bolts, nuts, and washers.

For hollow-core metal partitions, provide solid backing into which sheet-metal screws can be secured. If two units are installed back-to-back, then provide threaded sleeves and machine screws for the full thickness of partition.

For plaster or dry wall construction, provide concealed backing to comply with local building codes, then secure unit with #7 x 1-1/2" (3.8 x 38mm) or longer sheet-metal screws.

For other wall surfaces, provide #7 x 1-1/2" (3.8 x 38mm) sheet-metal screws and fiber plugs or expansion shields, or provide 1/8" (3mm) toggle bolts or expansion bolts.

SPECIFICATION:

Surface-mounted toilet tissue dispenser and utility shelf shall be type-304 stainless steel with satin finish. Shelf shall have 1/2" (13mm) return edges with front edge hemmed for safe handling. *Spindles shall be chrome-plated plastic with heavy-duty internal spring and shall hold standard-core toilet tissue rolls up to 5-1/2" (140mm) diameter (1800 sheets). Manufacturer's service and parts manual shall be provided to the building owner/manager upon request.

**Theft-resistant spindle (part No. 283-604) available as a replacement part.*

Surface-Mounted Toilet Tissue Dispenser And Utility Shelf shall be Model B-2840 of Bobrick Washroom Equipment, Inc., Clifton Park, New York; Jackson, Tennessee; Los Angeles, California; Bobrick Washroom Equipment Company, Scarborough, Ontario; Bobrick Washroom Equipment Pty. Ltd., Australia; and Bobrick Washroom Equipment Limited, United Kingdom.